

Printer:	Taffarello S.P.A.
Machine:	Uteco - Onyx
Ink:	Eston pigments – Visa varnish
Anilox:	CMYK - 260# v.5 / Spot – 120# v.15
Tape:	Tesa 73526 – Tesa 73524
Repro:	112 lpi with Esko LED XPS Crystal
Substrate:	Recycled paper 170 gsm
Prepress:	NuMaber
Plates:	Asahi AWP™ CLFM 45"/1.14 mm

About Asahi Photoproducts

Asahi Photoproducts is a subsidiary of the Asahi Kasei Corporation. It is one of the leading pioneers of flexographic photopolymer plate development. By creating high quality flexographic solutions and through continued innovation, the company aims at driving print forward in balance with the environment."





Printer: Fiorini International

Machine: Windmoller and holscher - Miraflex CM

Ink: Sun Chemical

Anilox: 360 / 200 / 160 / 120

Tape: Tesa FE-X 73526 Flex Med-hard

Repro: 125 lpi with Esko LED XPS Crystal

Substrate: Paper

Prepress: Ismacolor

Plates: Asahi AWP™ CLFM 45"/1.14 mm

About Asahi Photoproducts

Asahi Photoproducts is a subsidiary of the Asahi Kasei Corporation. It is one of the leading pioneers of flexographic photopolymer plate development. By creating high quality flexographic solutions and through continued innovation, the company aims at driving print forward in balance with the environment."



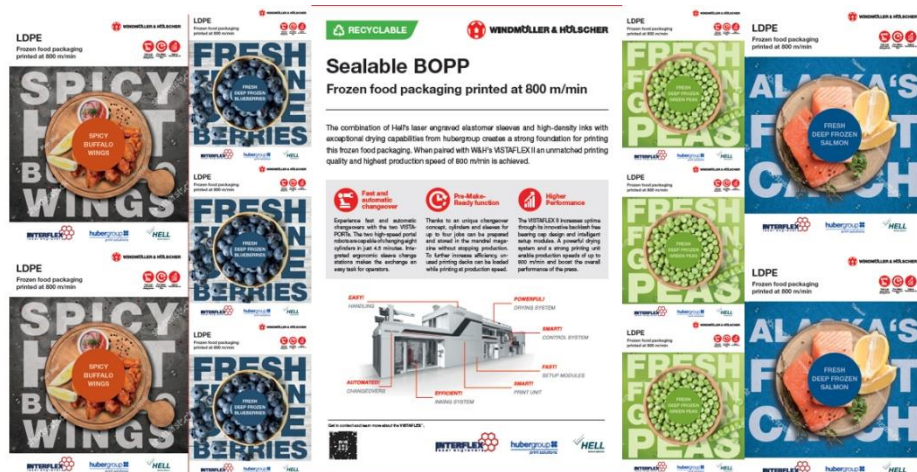


Printer:	Bobst Firenze
Machine:	Bobst M5
Ink:	CMYK + Silver / Sun Chemical LM
Anilox:	GTT S / GTT M
Tape:	Lohmann 5.2
Repro:	223 lpi with Esko LED XPS Crystal Screen
Substrate:	PSL
Prepress:	Bobst Firenze
Plates:	Asahi AWP™ CLFM 45"/1.14 mm

About Asahi Photoproducts

Asahi Photoproducts is a subsidiary of the Asahi Kasei Corporation. It is one of the leading pioneers of flexographic photopolymer plate development. By creating high quality flexographic solutions and through continued innovation, the company aims at driving print forward in balance with the environment."





Printer:	Windmüller & Hölscher
Machine:	New Alphaflex
Ink:	Siegwerk, water based inks (Type WB7)
Color:	4 C (Frozen food), 4 C + 4 Spot (Dry fruits)
Tape:	3M 1020
Sleeve:	Rossini 162 bridge Adapter and Rossini Hardcoat Sleeve
Substrate:	Frozen food (30µm LDPE weiß) Dry fruits (82 gsm high barrier paper, weiß, Sappi Gloss OHG)
Plates:	Asahi AFP™ NFT 1.14 mm
Screen:	137 lpi
Printing speed:	400 m/min (1,312 feet/min) Face Print

About Asahi Photoproducts

At Asahi we are very honored that the launch of the new W&H Alphaflex machine on Drupa is done with our AFP™-NFT plate. The highlight of the new machine is high precision bearings and components of the printing decks giving trust to decades of W&H printing quality combined with an improved level of energy efficiency due to long ink drying tunnels with optimised individual switching of dryer. At last the machine was developed for easy operator handling with easy-setup guidance automation to achieve the highest possibly print quality even with unexperienced operator. The standard printing width is 1.270 mm and the 8-colour machine can be used either for solvent inks on film or water based inks on paper with up to 140 g/m² board thickness which is making this machine unique in this segment.



1. Dry fruits with barrier paper

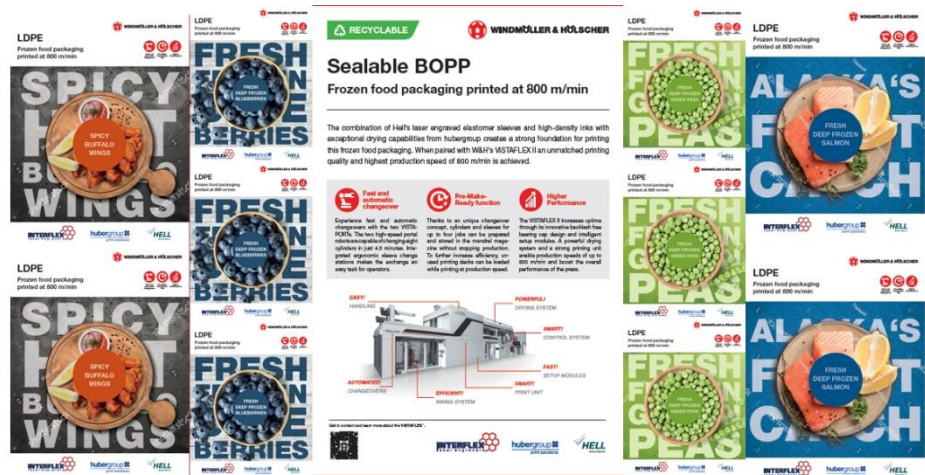


Dry fruits printed on barrier paper with water based based inks face side print:

Print deck assignment:

Print unit	Colour	Anilox roller	Sticky back
1	Yellow	340/5,5	1020
2	P485	200/10,0	1520
3	Magenta	340/5,5	1020
4			
5	Fond 2 ??	340/5,5	1520
6	Cyan	340/5,5	1020
7	Fond3 ??	340/5,5	1520
8	Black	340/5,5	1020

2. deep frozen packaging



Deep frozen printed on LDPE white with water based inks face side print:

Print deck assignment:

Print unit	Colour	Anilox roller	Sticky back
1	Yellow	340/5,5	1020
2			
3	Magenta	340/5,5	1020
4			
5			
6	Cyan	340/5,5	1020
7			
8	Black	340/5,5	1020



Printer:	Silbo Sp. z o.o.
Machine:	Windmüller & Hölscher
Ink:	FlexBio-Chespa water Inks
Anilox:	1) WH - 160/12 2) P 144 - 300/7.5 iPro 3) Yellow - 400/4.7 4) Magenta - 400/4.7 5) Black - 400/4.0 iPro 6) P 300 - 200/9.5 (2) 7) P 355 - 160/12 8) P 7546 - 200/9.5 (3) 9) P 2300 - 200/9.0 (1) 10) Varnish - 280/7.5
Tape:	3M medium hard violet
Repro:	140 lpi with Esko LED XPS Crystal
Substrate:	Metalizer – Futamura NatureFlex NM 23 mic. / FlexiBIO certified for compostability in industrial and home conditions.
Prepress:	Chespa Sp. z.o.o
Plates:	Asahi AWP™ DEW 45"/1.14 mm, Asahi AWP™ CleanFlat Medium 45"/1.14 mm

About Asahi Photoproducts

Asahi Photoproducts is a subsidiary of the Asahi Kasei Corporation. It is one of the leading pioneers of flexographic photopolymer plate development. By creating high quality flexographic solutions and through continued innovation, the company aims at driving print forward in balance with the environment."



Printer: Silbo Sp. z o.o.

Machine: Windmüller & Hölscher

Ink: FlexiEco -Chespa water Inks

Anilox:

- 1) WH - 160/12
- 2) P 7506 - 400/4.0 IPro
- 3) Yellow - 400/4.7
- 4) Magenta - 300/7.5 IPro
- 5) Black - 300/6.5
- 6) P 300 - 200/9.5
- 7) P 355 - 160/12
- 8) P 7546 - 200/9.5
- 9) P 2300 - 200/9.0
- 10) Varnish - 280/7.5

Tape: 3M medium hard violet

Repro: 128 lpi with Esko LED XPS Crystal

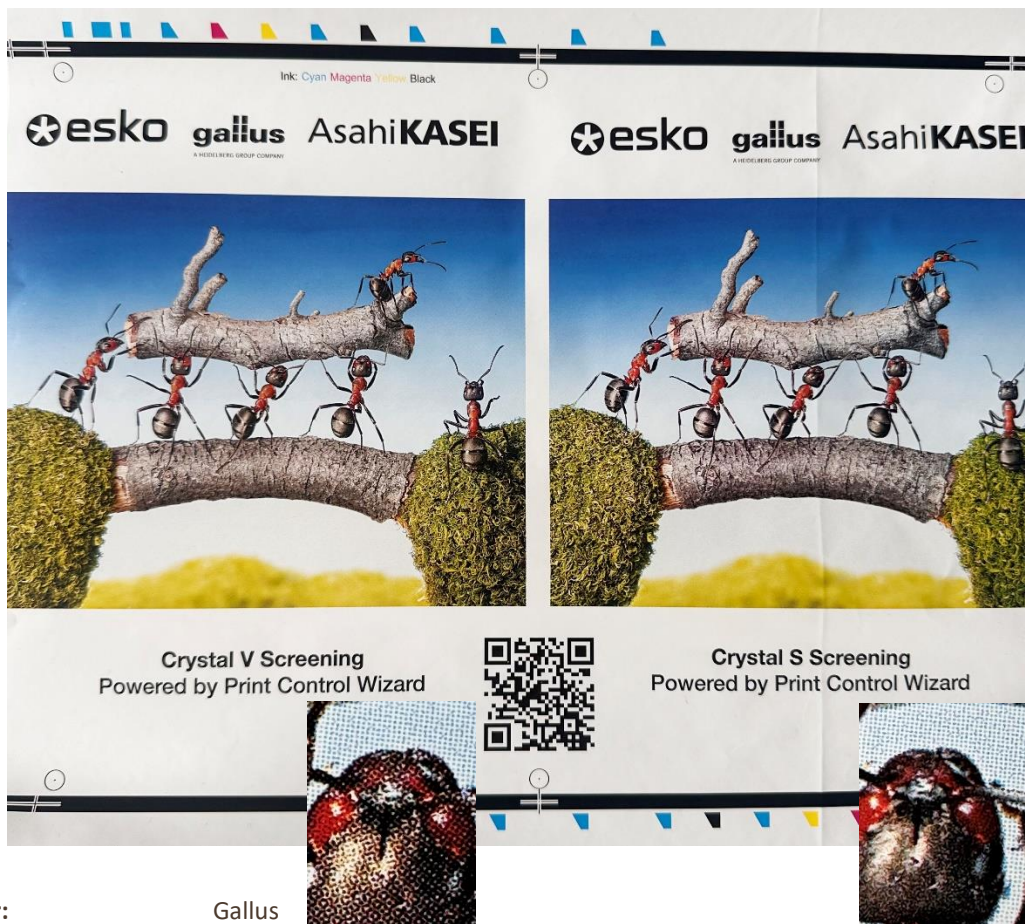
Substrate: Paper - Advantage Protect White 80 g / FlexiEKO paints based on raw materials from renewable sources.

Prepress: Chespa Sp. z o.o

Plates: Asahi AWP™ DEW 45"/1.14 mm, Asahi AWP™ CleanFlat Medium 45"/1.14 mm

About Asahi Photoproducts

Asahi Photoproducts is a subsidiary of the Asahi Kasei Corporation. It is one of the leading pioneers of flexographic photopolymer plate development. By creating high quality flexographic solutions and through continued innovation, the company aims at driving print forward in balance with the environment."



Printer:	Gallus
Machine:	Labelmaster LM 440
Ink:	Flint Flexocure Force
Anilox:	Heidelberg, Cyan 480 l/cm, 2,5 cm ³ /m ² , Magenta 480 l/cm, 2,5 cm ³ /m ² Yellow 480 l/cm, 3,5 cm ³ /m ² , Black 480 l/cm, 4,5 cm ³ /m ²
Tape:	Tesa Red Soft
Repro:	Comparison of Esko Crystal V vs. Esko Crystal S
Substrate:	PP white
Plates:	Asahi AWP™ -DEW 45"/1.14 mm

About Asahi Photoproducts

Asahi Photoproducts is a subsidiary of the Asahi Kasei Corporation. It is one of the leading pioneers of flexographic photopolymer plate development. By creating high quality flexographic solutions and through continued innovation, the company aims at driving print forward in balance with the environment.





Printer:	ACM spa
Machine:	Uteco
Ink:	Sunchemical Aqualam WBI
Anilox:	440 V 4,2
Tape:	3M
Repro:	149 lpi with Esko LED XPS Crystal
Substrate:	PET 12 Mycron TRANSPARENT
Prepress:	ACM spa
Plates:	Asahi AWP™ DEW 45"/1.14 mm

About Asahi Photoproducts

Asahi Photoproducts is a subsidiary of the Asahi Kasei Corporation. It is one of the leading pioneers of flexographic photopolymer plate development. By creating high quality flexographic solutions and through continued innovation, the company aims at driving print forward in balance with the environment."

